

Table of Contents

- [Production Steps](#)
 - [1. First Bootup](#)
 - [2. Update of all system partitions](#)
 - [3. Verify the system configuration](#)
 - [4. Load the configuration](#)
 - [5. Set the CIOC back to customer initial settings](#)
- [Additional Notes](#)
 - [Note for Patches](#)
 - [What if the statusfile won't appear?](#)
 - [How to run rescue image](#)

Production Steps

1. First Bootup

- Connect CIOC Board to power supply and connect the ethernet cable to your laptop
- Wait for bootup (blue light stopped flashing)
- Enter the IP adress of the CIOC in your browser (Default 192.168.0.190). The WebUI should display the current software version e.g. V8.19.00

2. Update of all system partitions

- Connect an SFTP Client to the board, by using admin/admin
- Place the tar archive with "R" at the end in the update folder (e.g cioc_upg-ce1a7b8df-RC6_V8.22.00R_loc.tar)
- The system will not reboot (indicated in the status file)
- Run the Rescue Image (Described below: How to run rescue image)
- On WebUI, SFTP or SSH console login with admin/admin
- You will get prompted with an password change request
- Change it to e.g. "Test123!"

3. Verify the system configuration

- Connect an FTP/SFTP client to the board, by using admin and your new password
- Navigate to /download/docs/sysinfo.txt
- Check if the following partitions are on the same state:
 - FS1 Version
 - FS2 Version
 - Rescue Version - (with "R" as postfix)
- If not, repeat the steps "Update of all system partitions"

4. Load the configuration

- Copy the e.g. DeviceInfo_2023K000047957_20230411_10-50-17_setup.txt into the update folder, you will recieve it from the DIG-DeviceInfoGenerator.
- The filename will be created from the Productnumber, Current Date and Time.
- It should contain:

Scheme:

```
DEVICE;ART={ArticleNumber},HWCODE={Hardwarecode},SYSCODE={Systemcode};
FACTORY;Kw={CalenderWeek},YEAR={YEAR},SNR={Serialnubner},PNR={Productnumber};
OPT1;OPT1={OPTION};
```

(Remove the {} like in the example below)

Key	Value Options
	<ul style="list-style-type: none">• 0: no demister placed
OPT1	<ul style="list-style-type: none">• 1: demister placed

Note: check if the BOM includes 371264 or 377133 to know if it is present.

Example:

```
DEVICE;ART=3314.230,HWCODE=0,SYSCODE=9;
FACTORY;Kw=35,YEAR=24,SNR=600000000,PNR=123;
OPT1;OPT1=0;
```

- Copy the demanded Swtich_xxx_patch into the update folder
- Wait for reboot
- Connect an SFTP client to the board, by using admin and your new password
- Check the status file of the patch
- Log in via website
- Check if the softwareversion, type, ordernumber, product number matches with the ones you set.

5. Set the CIOC back to customer initial settings

- Run the Rescue image

Additional Notes

Note for Patches

- Since version 8.23.00, its not possible so use unsigned patches due security reasons.
- If you do so, you will get following errormessage: error: patch 'undefined' has wrong signature, state: failed
- Make sure you get the newest patches according to SAP list of materials (Stückliste)

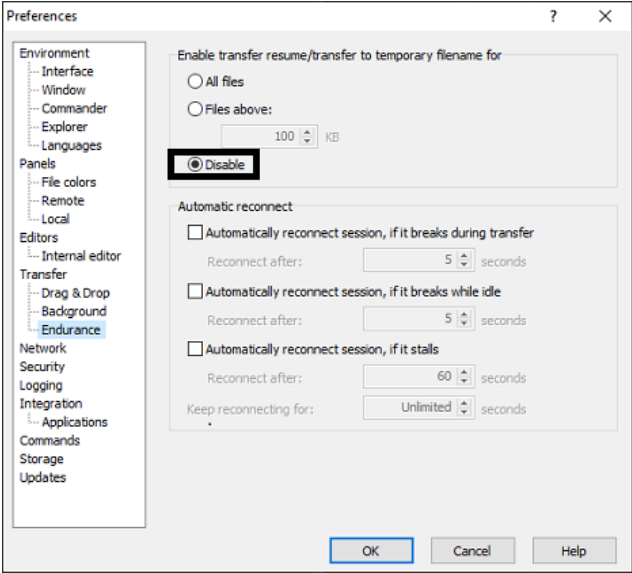
Example: **List old and new patches for the current CIOC devices:**

Nummer	Gerätename	Patchnummer	Patchname	Filename (current)	Filename (8.23.00)
3313610	Liquid Cooling Unit LCU CW	361453	CIOC1 Patch, LCP CW	switch_CIOC_LCU_NMP_loadSetup_v21.patch	switch_CIOC_LCU_NMB_loadSetup_v2.patch
3314130	LCP Rack CW, 30kW	347560	CIOC1 Patch, LCP CW 6 Fans	switch_CIOC_LCP_EBM_loadSetup_v21.patch	switch_CIOC_LCP_6Fans_EBM_loadSetup_v2.patch
3314230	LCP Rack CW 30kW	347560	CIOC1 Patch, LCP CW 6 Fans	switch_CIOC_LCP_EBM_loadSetup_v21.patch	
3314238	LCP Rack CW 30kW UL	347560	CIOC1 Patch, LCP CW 6 Fans	switch_CIOC_LCP_EBM_loadSetup_v21.patch	
3314250	LCP Rack CWG 35kW	347560	CIOC1 Patch, LCP CW 6 Fans	switch_CIOC_LCP_EBM_loadSetup_v21.patch	
3314260	LCP Rack CW, 53kW	347560	CIOC1 Patch, LCP CW 6 Fans	switch_CIOC_LCP_EBM_loadSetup_v21.patch	
3314268	LCP Rack CW, 53kW, UL	347560	CIOC1 Patch, LCP CW 6 Fans	switch_CIOC_LCP_EBM_loadSetup_v21.patch	
3314530	LCP Inline CW vorgezogen, 30kW	347560	CIOC1 Patch, LCP CW 6 Fans	switch_CIOC_LCP_EBM_loadSetup_v21.patch	
3314538	LCP Inline CW vorgezogen, 30kW, UL	347560	CIOC1 Patch, LCP CW 6 Fans	switch_CIOC_LCP_EBM_loadSetup_v21.patch	
3314540	LCP Inline CW bündig, 30kW	347567	CIOC1 Patch, LCP CW 4 Fans	switch_CIOC_LCP4_EBM_loadSetup_v21.patch	switch_CIOC_LCP_4Fans_EBM_loadSetup_v2.patch
3314542	LCP Inline CW bündig, 30kW	347567	CIOC1 Patch, LCP CW 4 Fans	switch_CIOC_LCP4_EBM_loadSetup_v21.patch	
3314548	LCP Inline CW bündig, 30kW, UL	347567	CIOC1 Patch, LCP CW 4 Fans	switch_CIOC_LCP4_EBM_loadSetup_v21.patch	

Nummer	Gerätename	Patchnummer	Patchname	Filename (current)	Filename (8.23.00)
3314550	LCP Inline CWG bündig, 28kW	347567	CIOC1 Patch, LCP CW 4 Fans	switch_CIOC_LCP4_EBM_loadSetup_v21.patch	
3314560	LCP Inline CW vorgezogen, 53kW	347560	CIOC1 Patch, LCP CW 6 Fans	switch_CIOC_LCP_EBM_loadSetup_v21.patch	
3314568	LCP Inline CW vorgezogen, 53kW, UL	347560	CIOC1 Patch, LCP CW 6 Fans	switch_CIOC_LCP_EBM_loadSetup_v21.patch	
3314570	LCP Inline CWG vorgezogen, 35kW	347560	CIOC1 Patch, LCP CW 6 Fans	switch_CIOC_LCP_EBM_loadSetup_v21.patch	

What if the statusfile won't appear?

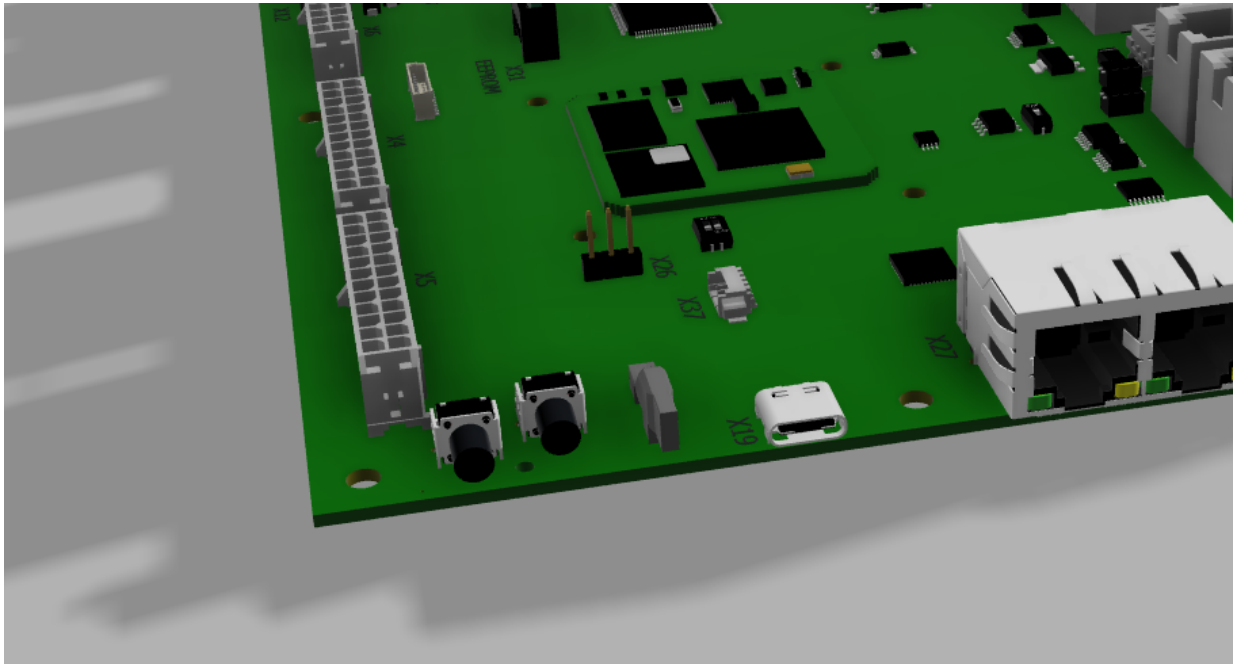
- This is an issue with your SFTP Client (This case is for WinSCP)



- Make sure, the transfer for temporary filename is DISABLED!

How to run rescue image

- Press and hold the left button (Set)
- Press right button and release (Reset)



- Release left button when led starts blinking
- After the rescue was sucessfull the device will start into the rescue image. All user settings are deleted